

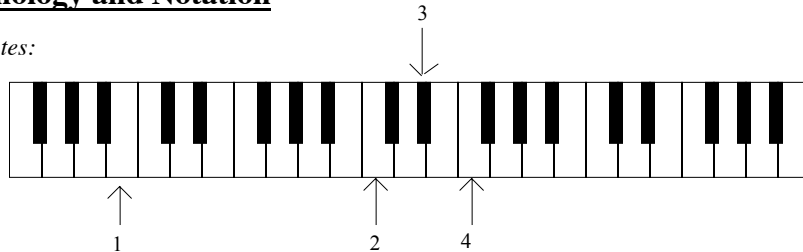
Name \_\_\_\_\_

Date: \_\_\_\_\_

# PYCO School of Music Music Theory Placement Exam

## I. General Terminology and Notation

A. Name these notes:

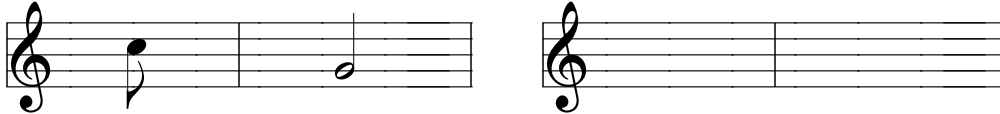


1. \_\_\_\_\_ 2. \_\_\_\_\_ 3. \_\_\_\_\_ 4. \_\_\_\_\_

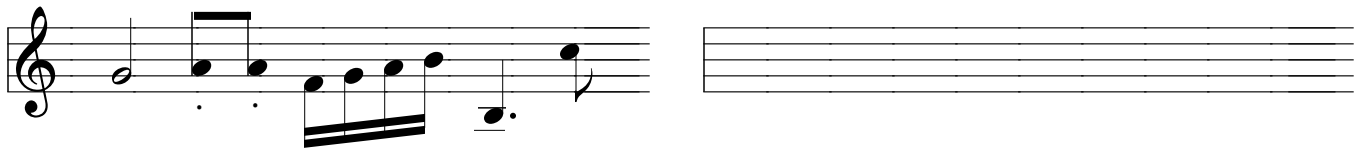
B. Put bar lines in these examples:



C. Notate a rest corresponding to the given notes:



D. CIRCLE all the errors in notation in this example, and NOTATE THE ENTIRE EXAMPLE correctly (Stem lengths are okay):



E. Circle the SLOWER tempo marking of each pair:

1. *Allegro*    *Andante*

2. *Presto*    *Grave*

F. Provide a definition for the following terms and symbols:

1. *dim.* \_\_\_\_\_

2. *rit.* \_\_\_\_\_

3. \_\_\_\_\_

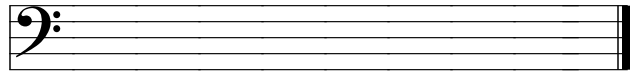
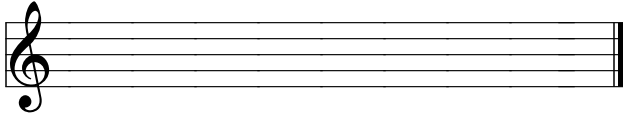
4. \_\_\_\_\_

## II. Scales

Notate the following scales USING ACCIDENTALS. Do NOT use key signatures:

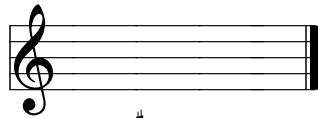
1. A<sup>b</sup> major, ASCENDING only

2. F<sup>#</sup> melodic minor, ASCENDING and DESCENDING

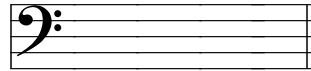


## III. Key Signatures:

Notate the following key signatures:



C<sup>#</sup> Major



G minor

## IV. Intervals:

A. Identify the following intervals by both quality (Maj, Min, Perf, Aug, Dim) and size (2, 3, 4, 5, 6, 7, 8):

(example)

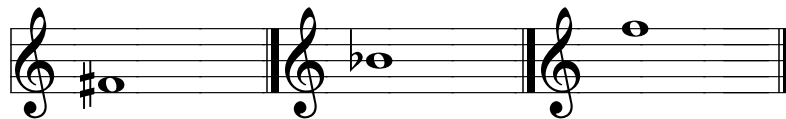


Min 3



\_\_\_\_\_

B. Notate a second note to form the correct interval with the given pitch -- up or down as indicated:



Dim. 5, up

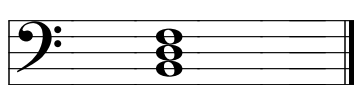
P4, up

Min 7, down

## V. Triads:

A. Identify the following triads (give root, quality, and inversion if any):

(example)



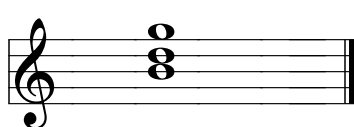
B dim.  
root position



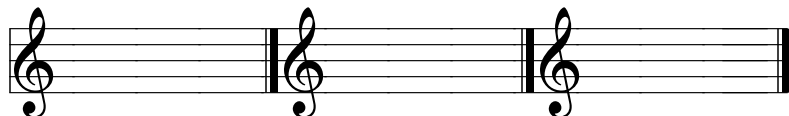
\_\_\_\_\_

B. Notate the following triads:

(example)



G Maj.  
1st inversion



Eb augmented  
(root position)

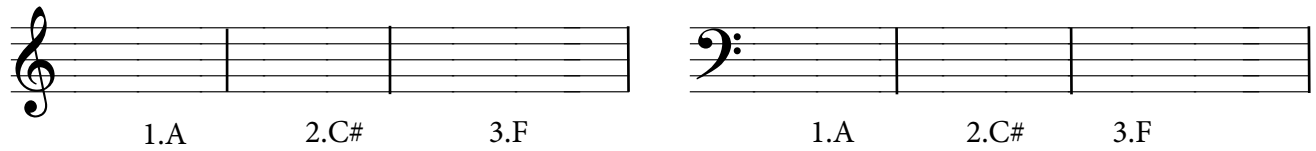
D Major  
(2nd inversion)

C# diminished  
(root position)

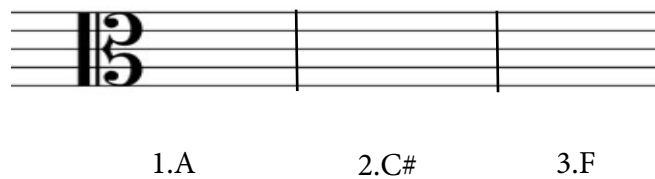
VI. **Clefs:**

A. In each clef provided, notate whole notes on 1) A, 2) C#, and 3) F (any registers)

BONUS: What triad (root and quality) do these three pitches create? \_\_\_\_\_



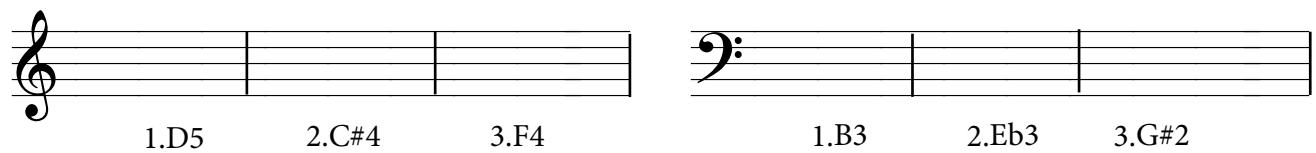
1.A      2.C#      3.F                      1.A      2.C#      3.F



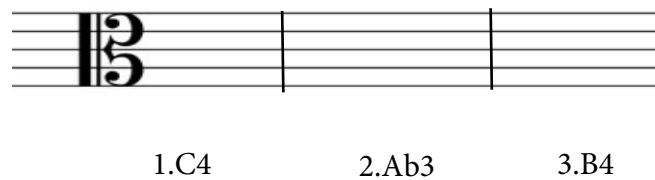
1.A      2.C#      3.F

VII. **Register:**

B. In each clef provided, notate the pitches in the given register as whole notes (C4 = middle C).



1.D5      2.C#4      3.F4                      1.B3      2.Eb3      3.G#2



1.C4      2.Ab3      3.B4